

Soft-Fix

Multi-Fixation

Soft-Fix is a non-adhesive, multifunctional fixation, which is used for patients of all ages. It serves as fixation for infusion cannulae, probes, catheters and life keeping tube systems. Furthermore, it is used for splints, wound care and as decubitus prophylaxis.



Soft-Fix is available on rolls in three different widths:

	Width	Length	SU	REF
1 Soft-Fix small	2 cm	5 m	12 pcs	30-01
2 Soft-Fix normal	4 cm	5 m	6 pcs	30-02
3 Soft-Fix large	6 cm	5 m	4 pcs	30-03
4 Soft-Fix hook and loop roll	2 cm	15 m	1 pce	30-04
5 Soft-Fix Mix	5 x small, 2 x normal, 1 x large, 1 x hook and loop roll		1 9 pcs	30-05



- > safe, quick and comfortable handling
- > eudermic – non-adhesive, soft and reclosable
- > latex-free – hypoallergenic
- > protection against decubitus ulcer
- > low density of material (less than 30% bear on skin)
- > reduction of tensile loading and tender spots
- > slightly absorptive – no loss in function, readjustable at any time
- > economic – can be cut according to the required length

The white foam side shows towards the patient or object so that the adherent effect, and therefore the optimal grip, is guaranteed!

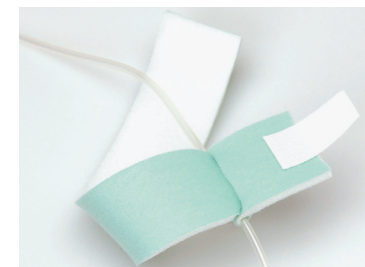
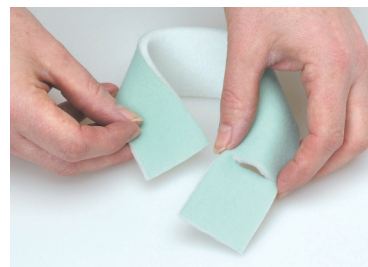
Depending on the application place Soft-Fix on the patient or at the object to be fixed and close the fixation with the hook and loop strip.

If necessary, cut into the fixation beforehand and build a loop.



its-novo.com

Soft-Fix

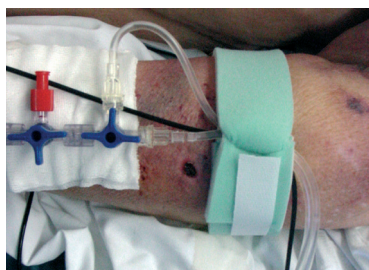


1 | Cut the fixation band and the hook and loop off according to the required length. Cut a slot in the material close to one end of the fixation band.

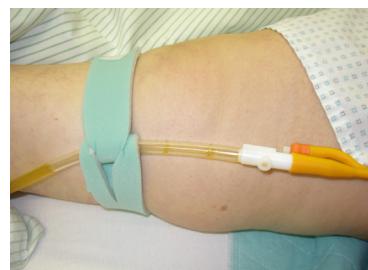
2 | The band does not rip at the cut surface.

3 | Put the other end through the slot to build a loop. The white foam side shows inwards so that the adherent effect, and therefore the optimal grip, is guaranteed!

4 | Put the tube into the loop and tighten it. Tightening ensures a safe fixation. Place the fixation band on the patient and fix it with the hook and loop strip.



Securing of venous drainages and infusion cannulae applied to parchment-like skin



Securing of urinary catheters or in dialysis



Securing of charging and discharging tube systems as well as saturation tubes for premature infants and babies



Securing and cushioning of tubes and cannulae, e.g. femoral catheters or arterial accesses by using a Soft-Fix loop